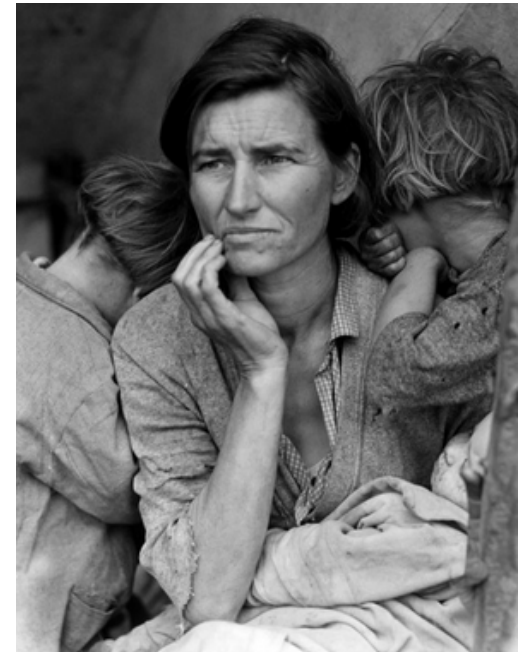
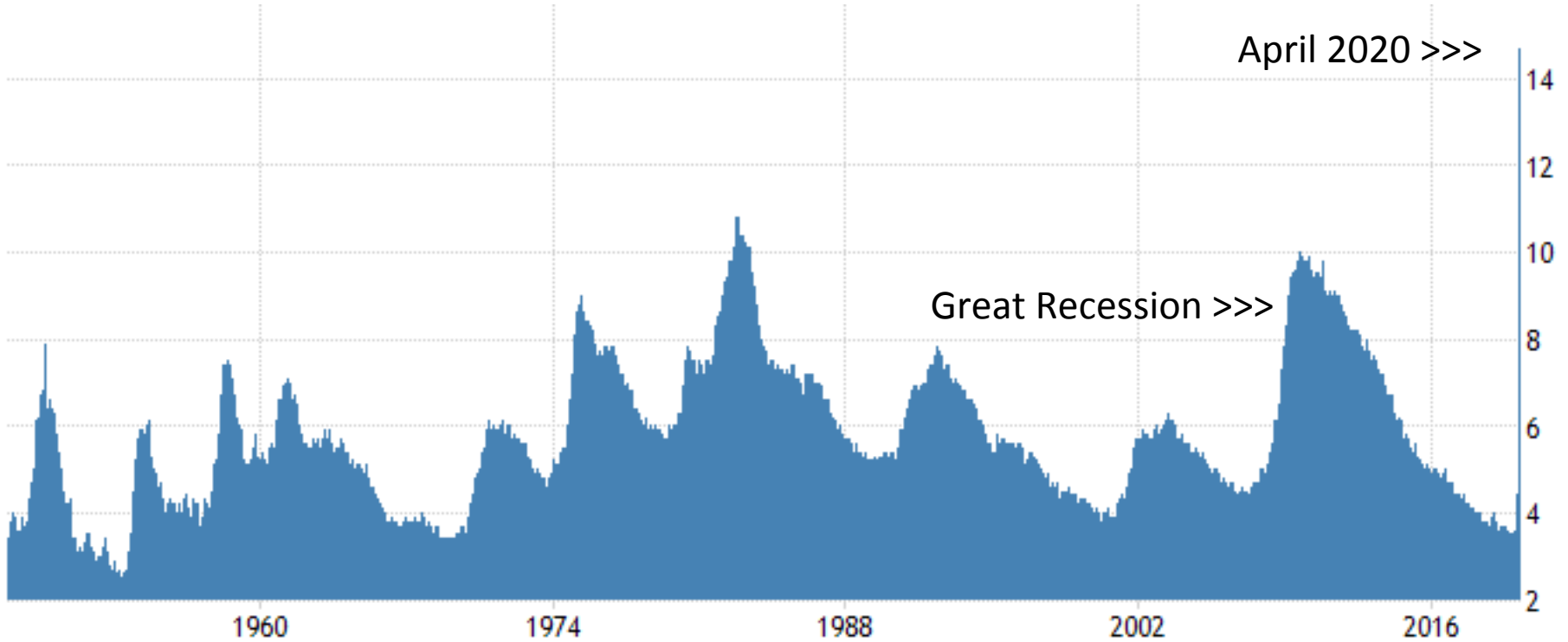


**History of U.S. Unemployment Rate**  
**History of UI Initial Claims**  
**History of U.S. Jobseekers vs. Job Vacancies**  
**History of U.S. Poverty**  
**History of U.S. Hourly Earnings**

*David R. Riemer*

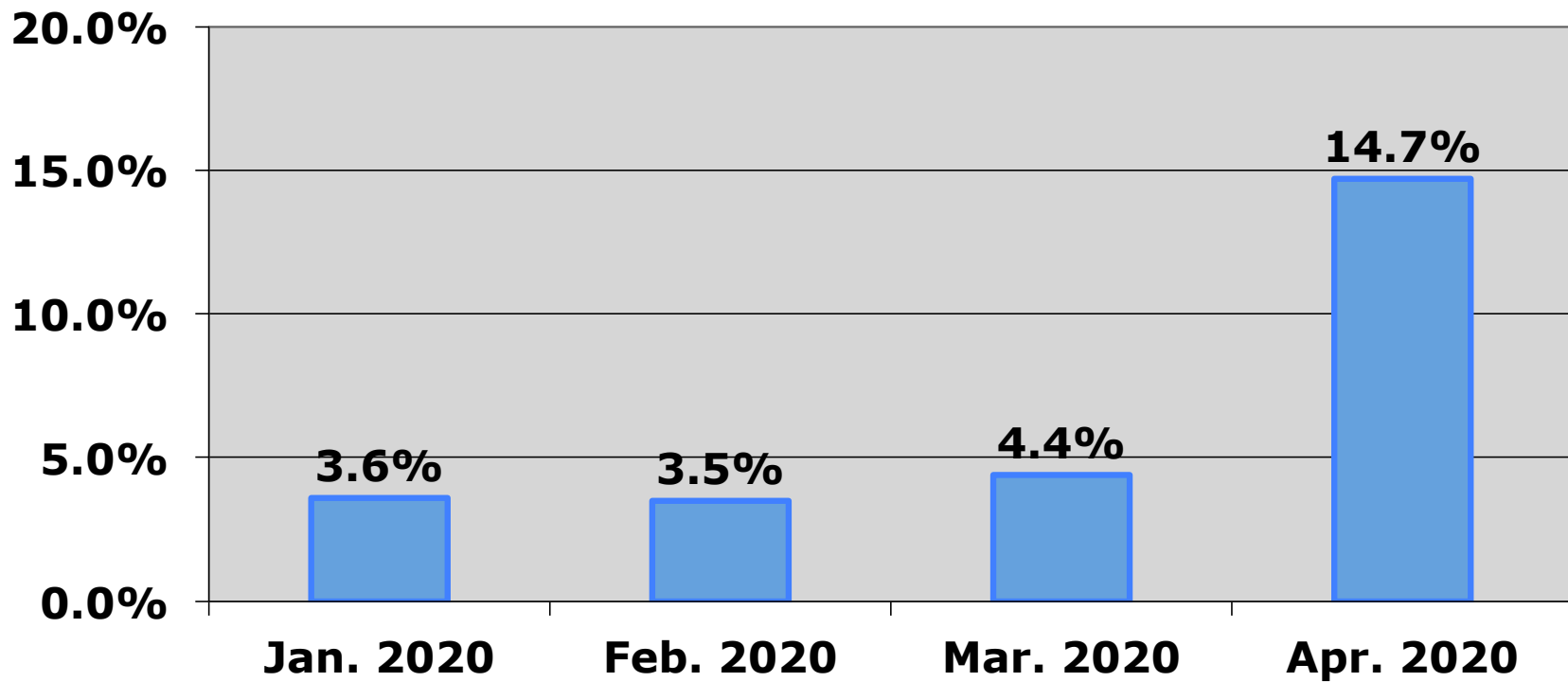


# U.S. Unemployment Rate: 1948 to 2020

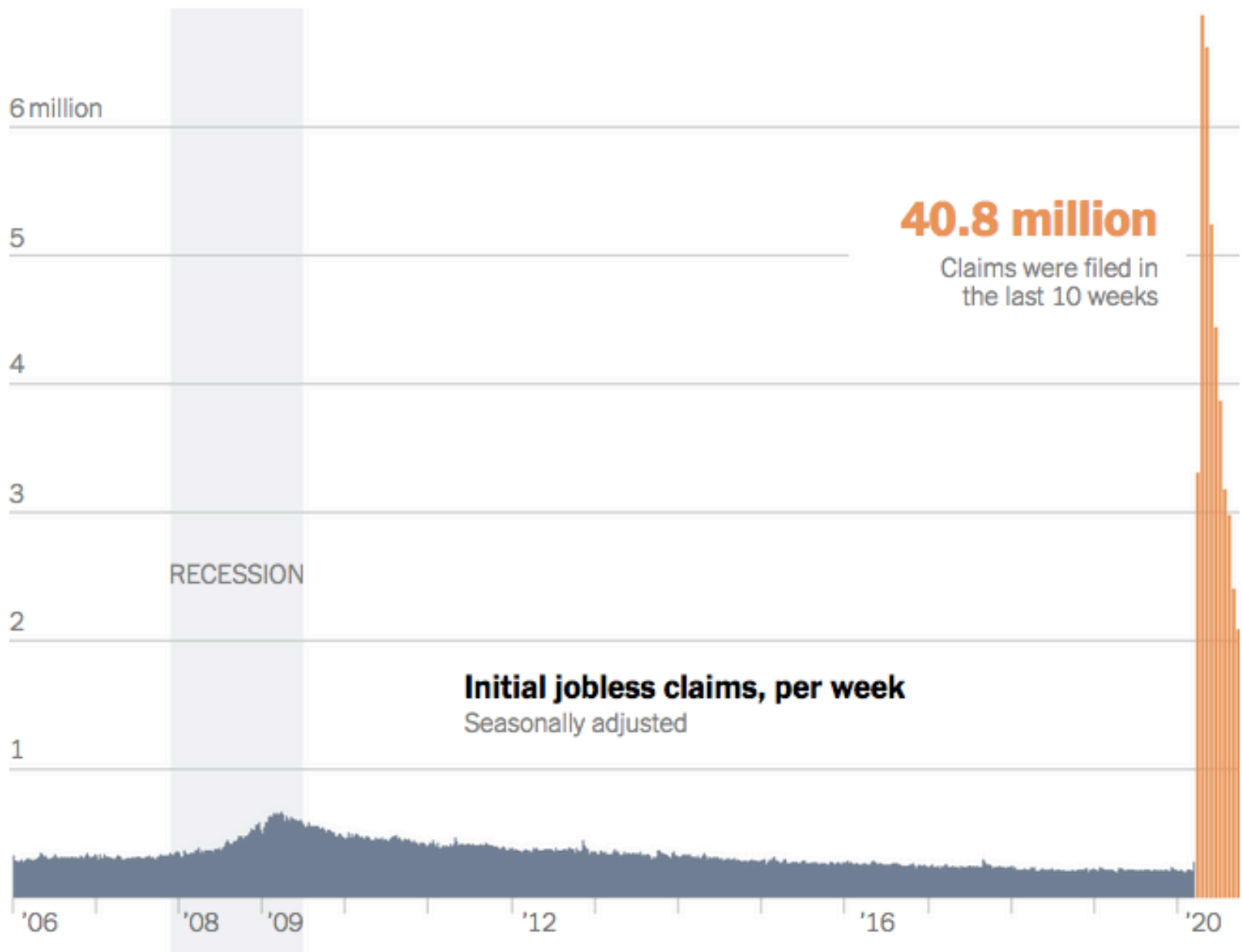


SOURCE: [TRADINGECONOMICS.COM](https://tradingeconomics.com) | U.S. BUREAU OF LABOR STATISTICS

# U.S. Unemployment Rate: Jan-April 2020



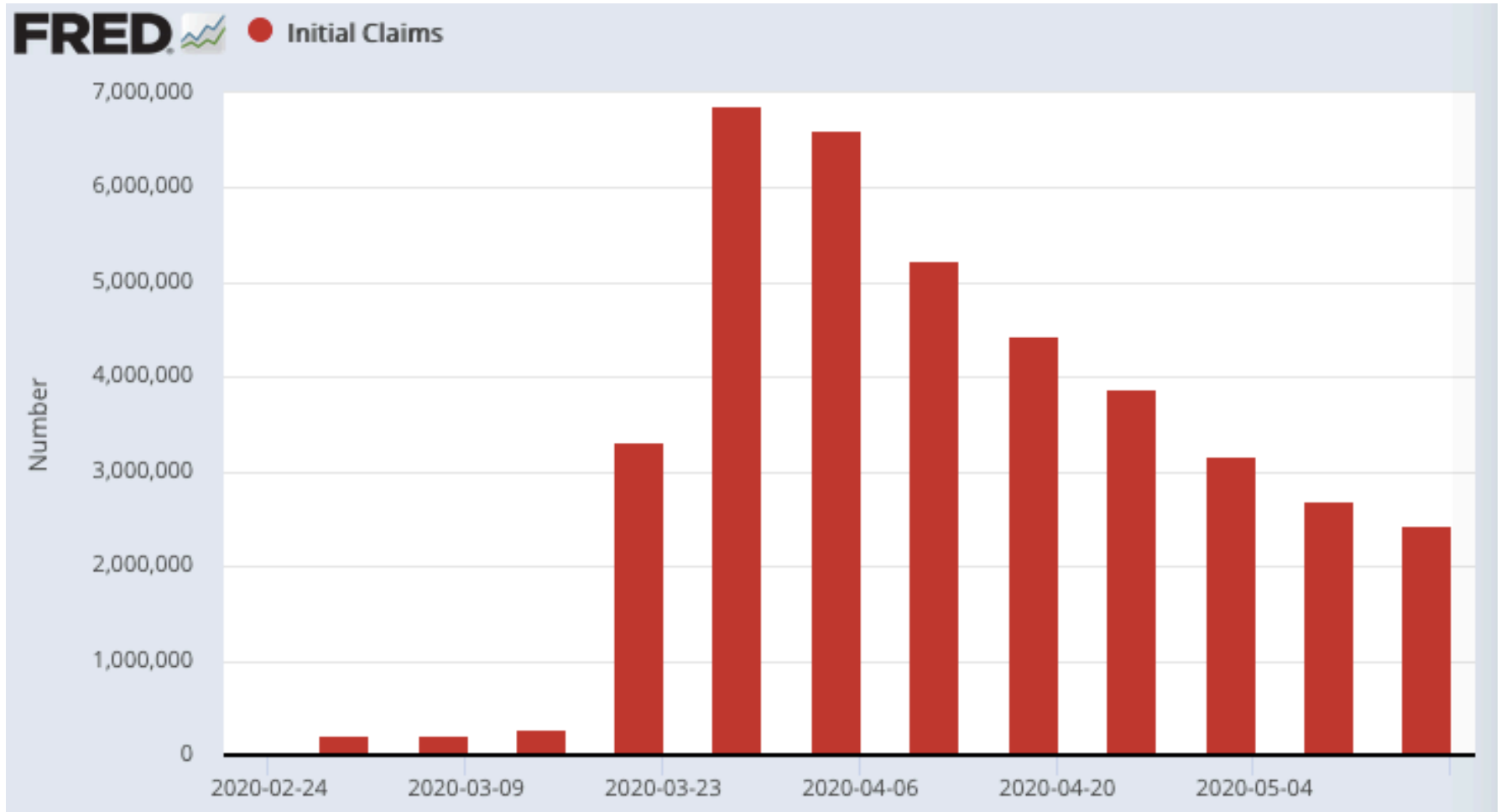
Source: US Bureau of Labor Statistics



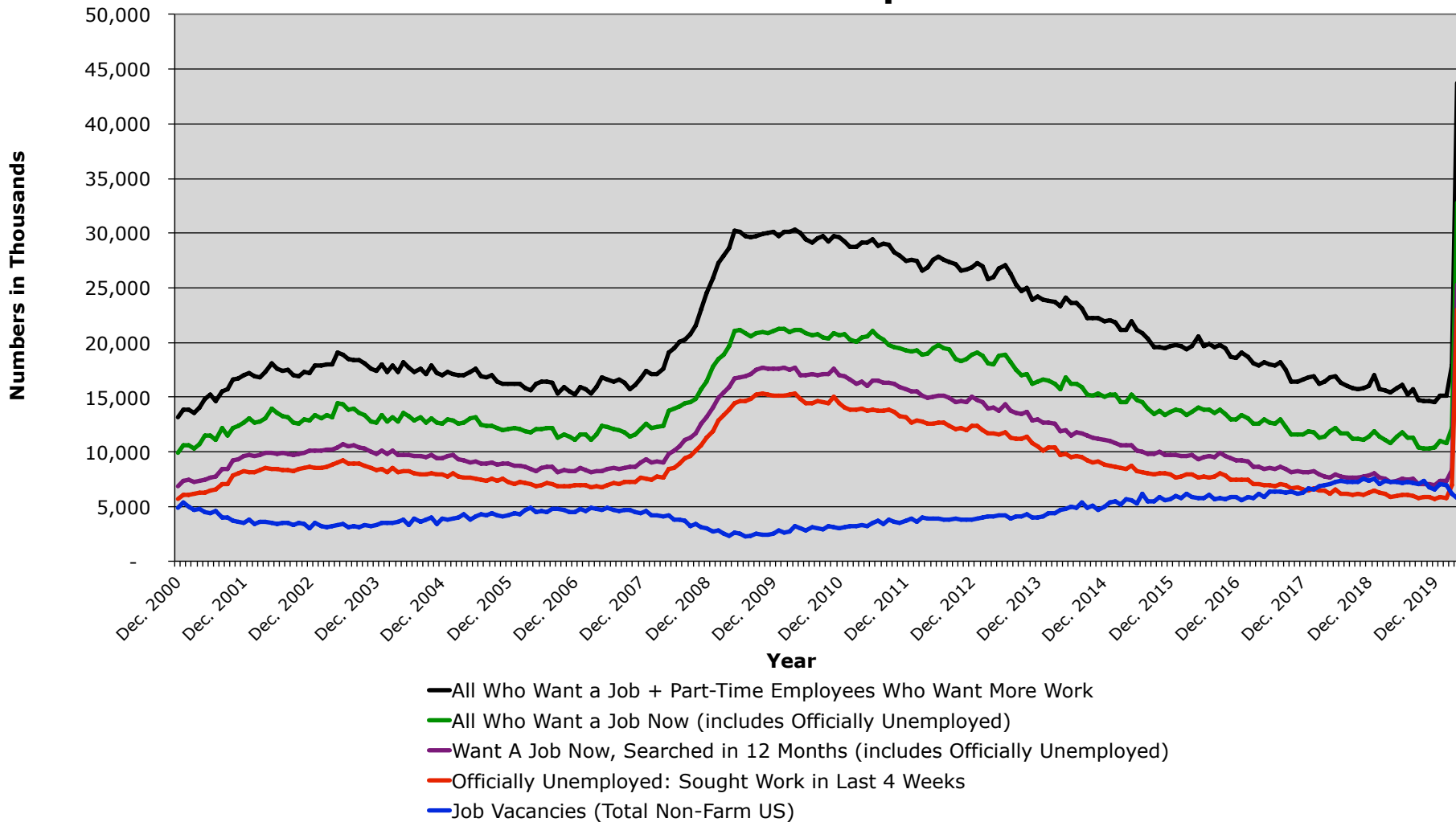
**Initial jobless claims, per week**  
Seasonally adjusted

**40.8 million**  
Claims were filed in  
the last 10 weeks

# U.S. Unemployment Insurance (UI) Initial Claims February – May 2020

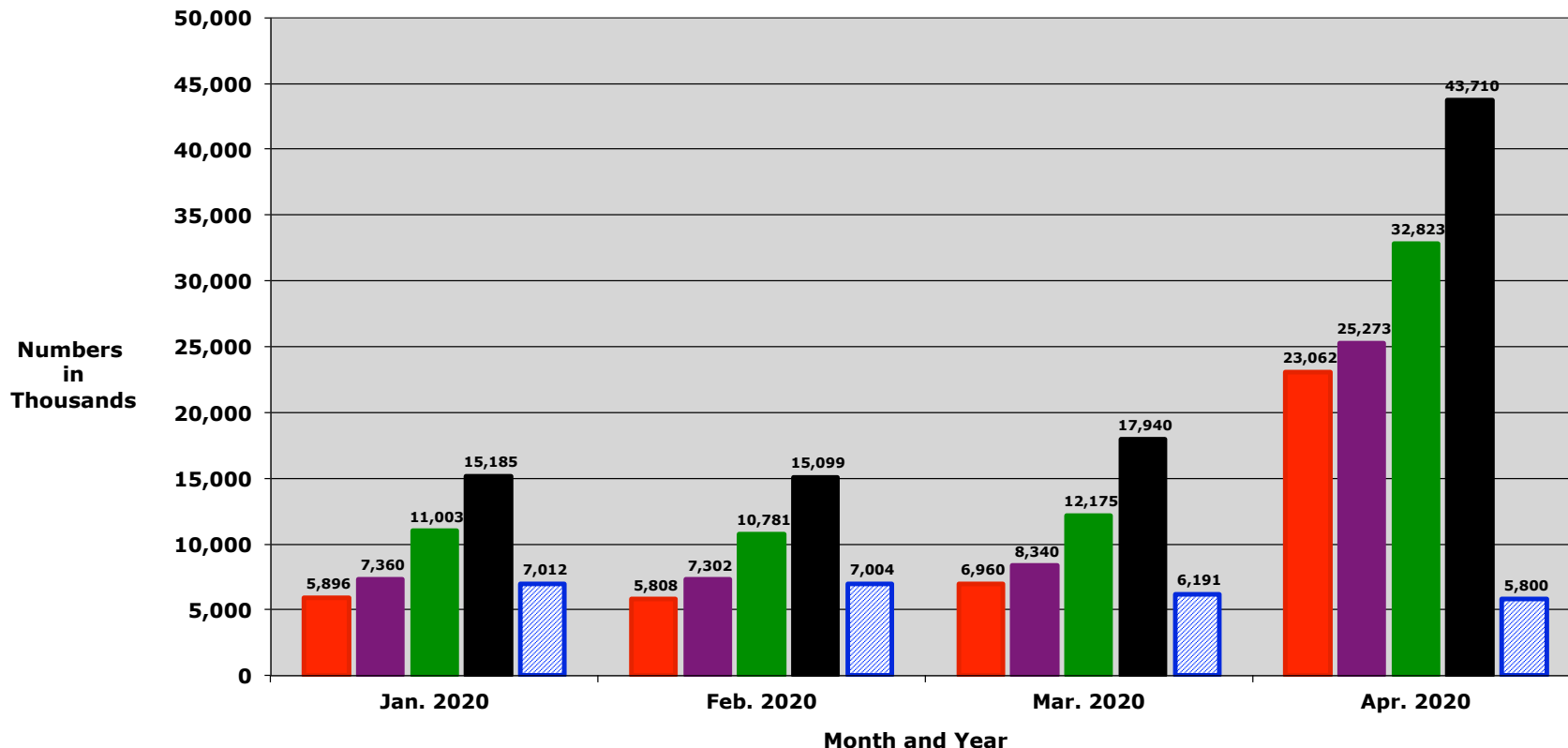


## US Job Seekers vs. Job Vacancies: December 2000 - April 2020



Source: US Bureau of Labor Statistics

# US Job Seekers v Job Vacancies: January 2000 - April 2020

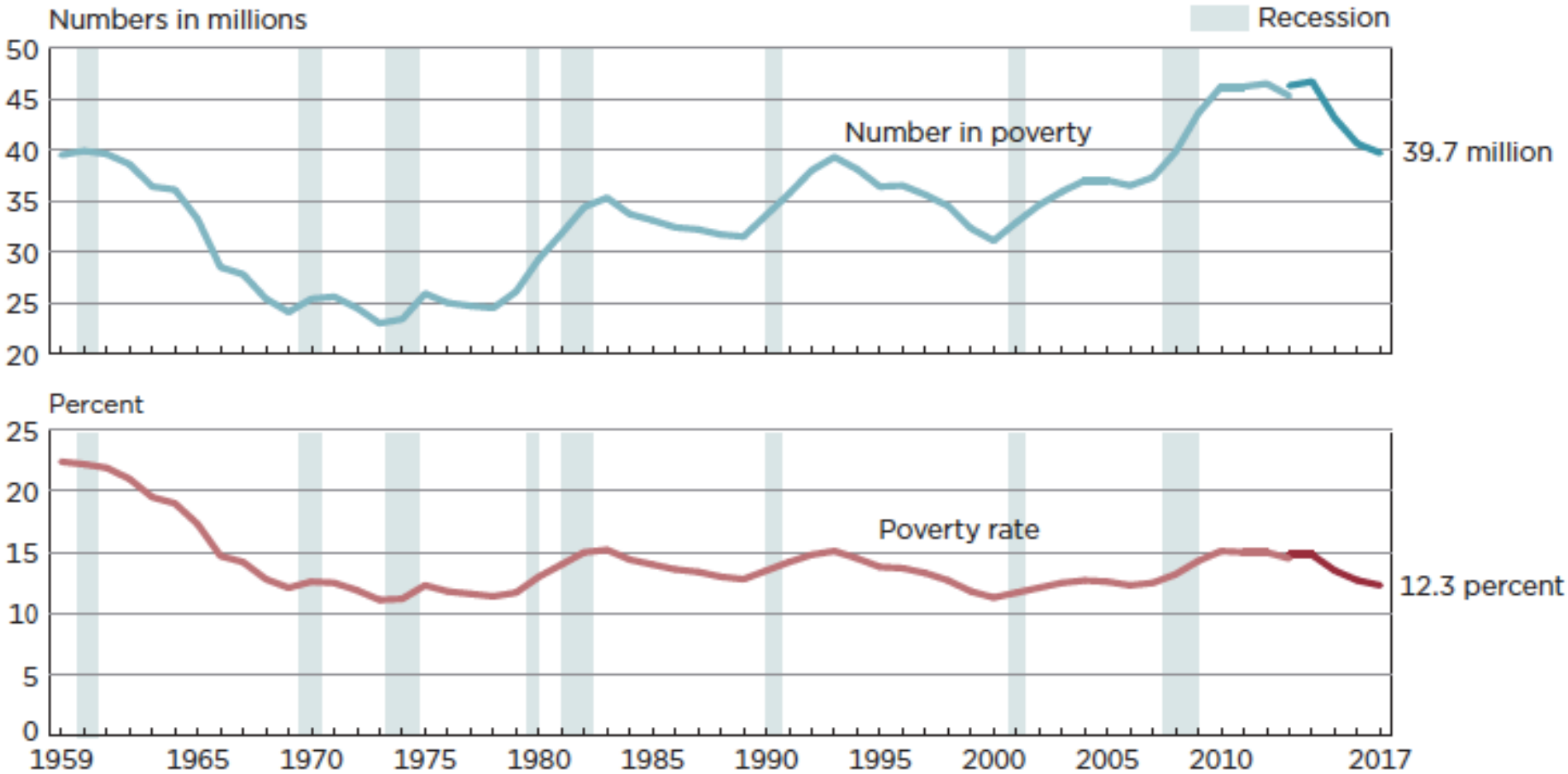


NOTE: Job Vacancy number for April 2020 is estimated

- Officially Unemployed: Sought Work in Last 4 Weeks
- Want A Job Now, Searched in 12 Months (includes Officially Unemployed)
- All Who Want a Job Now (includes Officially Unemployed)
- All Who Want a Job + Part-Time Employees Who Want More Work
- ▨ Job Vacancies (Total Non-Farm US)

# U.S. Poverty Rate: 1959 to 2017

## Number In Poverty and Poverty Rate: 1959 to 2017

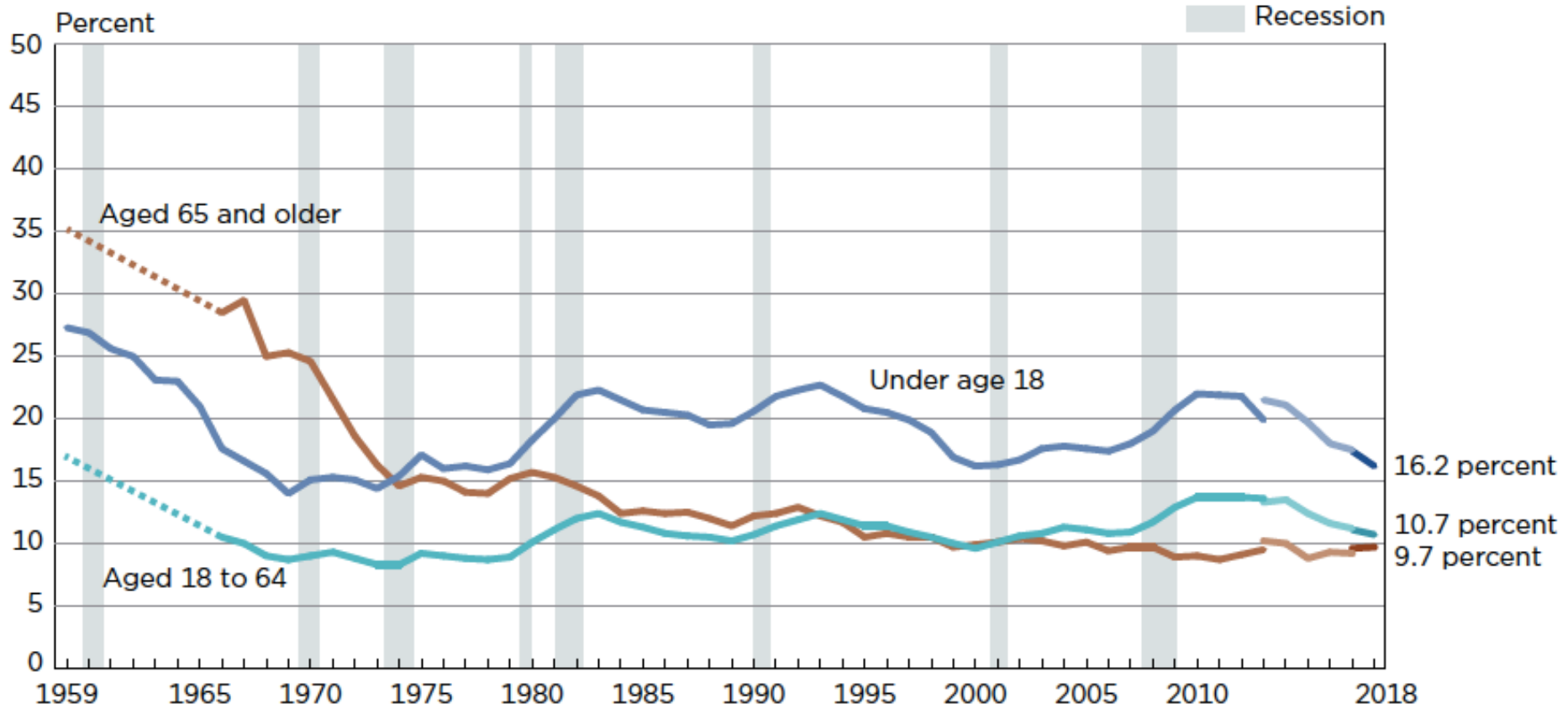


Note: The data for 2013 and beyond reflect the implementation of the redesigned income questions. The data points are placed at the midpoints of the respective years. For information on recessions, see Appendix A. For information on confidentiality protection, sampling error, nonsampling error, and definitions, see <[www2.census.gov/programs-surveys/cps/techdocs/cpsmar18.pdf](http://www2.census.gov/programs-surveys/cps/techdocs/cpsmar18.pdf)>.

Source: U.S. Census Bureau, Current Population Survey, 1960 to 2018 Annual Social and Economic Supplements.



## Poverty Rates by Age: 1959 to 2018



Note: The data for 2017 and beyond reflect the implementation of an updated processing system. See Appendix D for more information. The data for 2013 and beyond reflect the implementation of the redesigned income questions. The data points are placed at the midpoints of the respective years. Data for people aged 18 to 64 and aged 65 and older are not available from 1960 to 1965. For information on recessions, see Appendix A. For information on confidentiality protection, sampling error, nonsampling error, and definitions, see <<https://www2.census.gov/programs-surveys/cps/techdocs/cpsmar19.pdf>>.

Source: U.S. Census Bureau, Current Population Survey, 1960 to 2019 Annual Social and Economic Supplements.

# U.S. Average Real Hourly Earnings: 1965 to 2019

